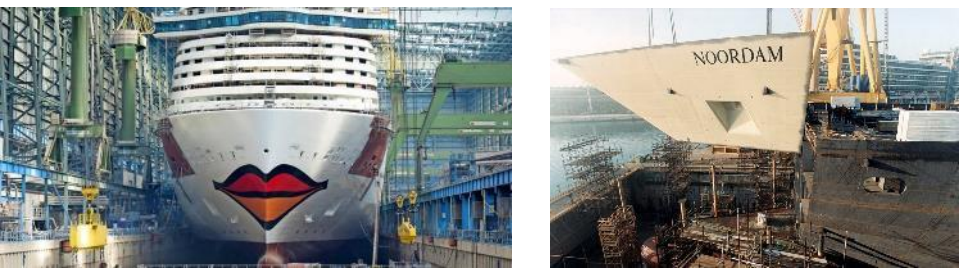
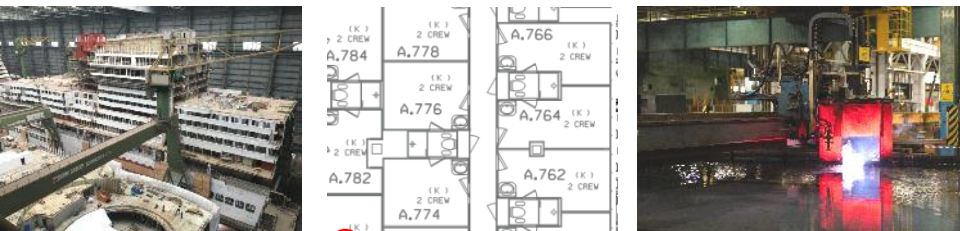
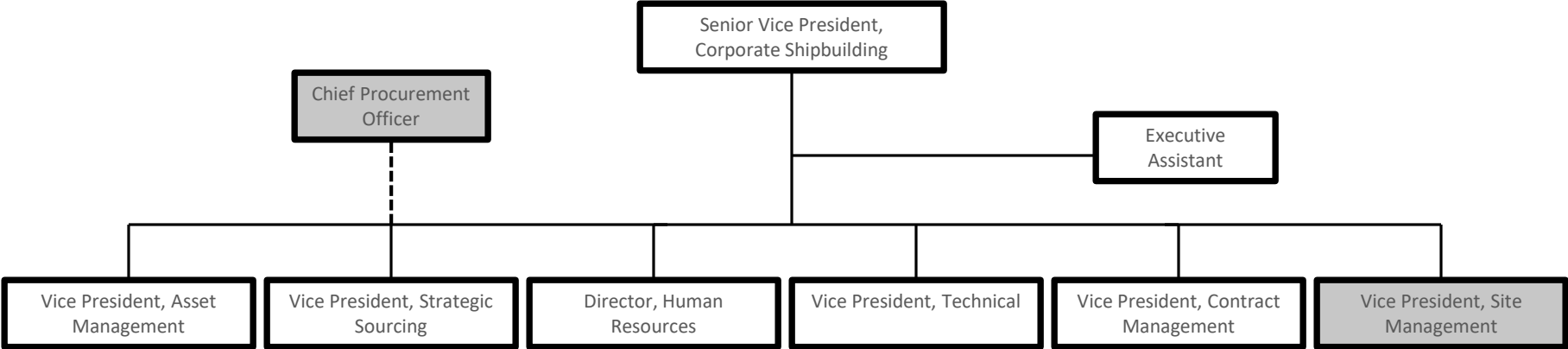


*Corporate Shipbuilding
UK Proposed Structure
1 August 2020*



CARNIVALTM
CORPORATE SHIPBUILDING

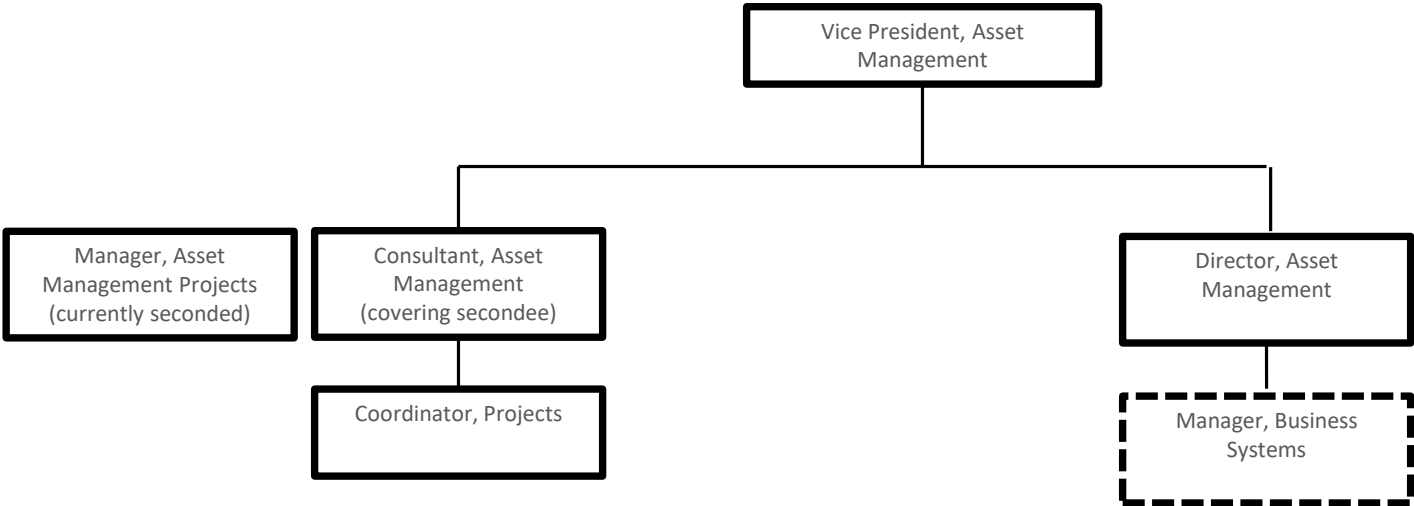
Exec Team



 = Non UK

Note: Document created for purposes of consultation in the UK, and to demonstrate proposed roles in the UK on 1 August 2020.

Asset Management

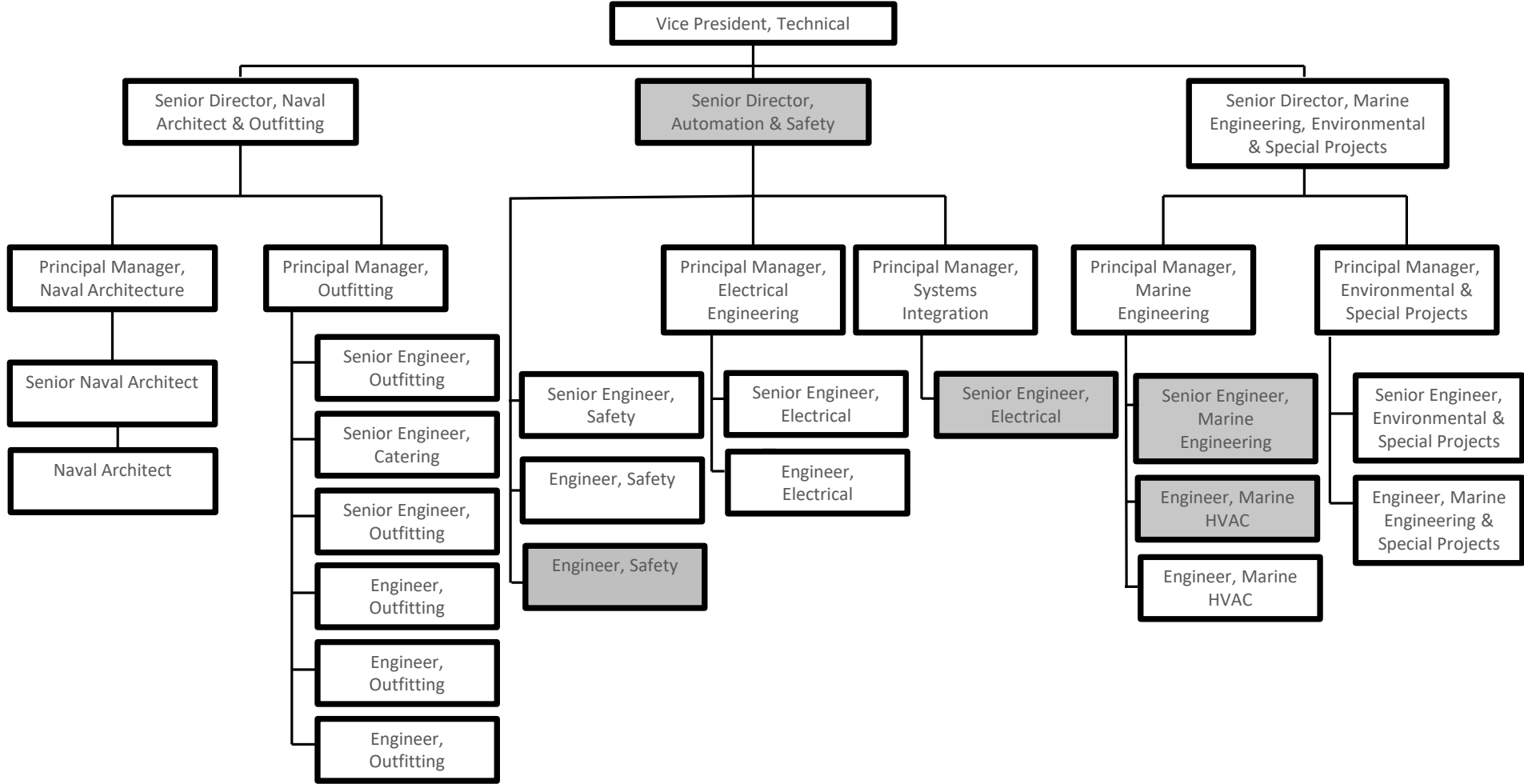


 = Proposed new role

 = Non UK

Note: Document created for purposes of consultation in the UK, and to demonstrate proposed roles in the UK on 1 August 2020.

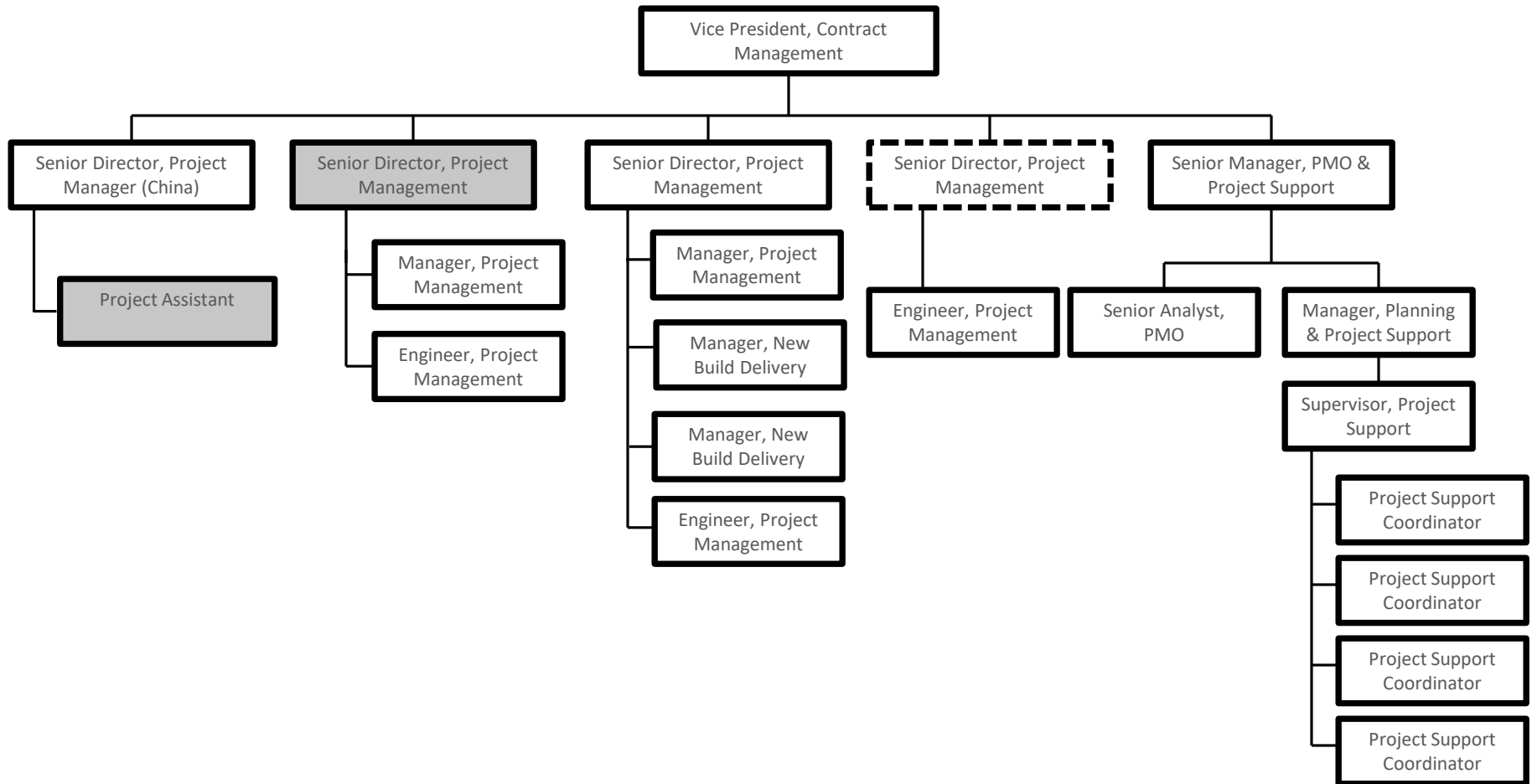
Technical



 = Non UK

Note: Document created for purposes of consultation in the UK, and to demonstrate proposed roles in the UK on 1 August 2020.

Contract Management

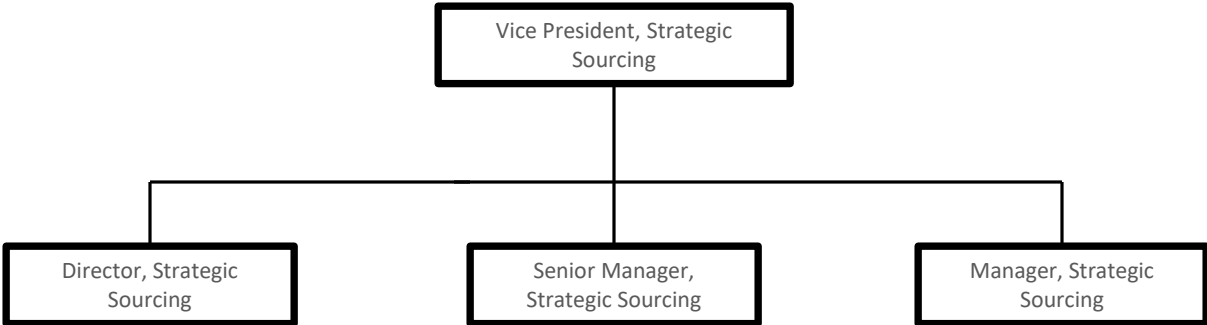


 = Proposed new role

 = Non UK

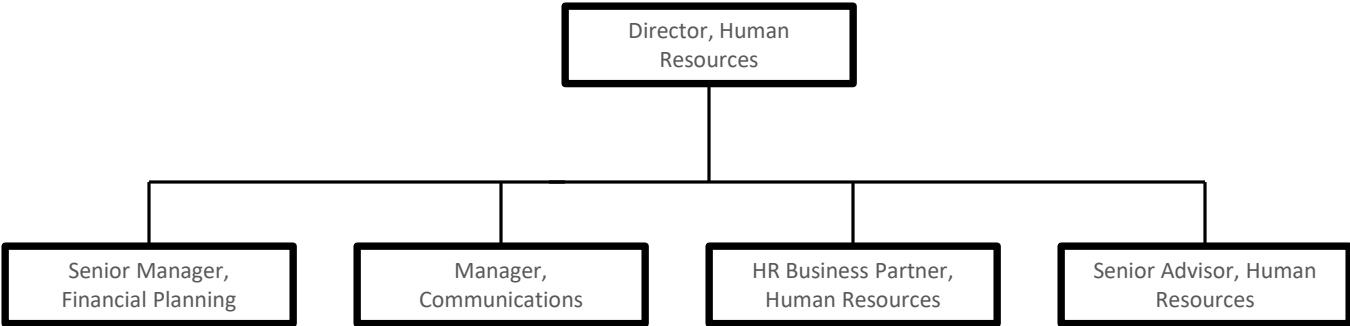
Note: Document created for purposes of consultation in the UK, and to demonstrate proposed roles in the UK on 1 August 2020.

Strategic Sourcing



Note: Document created for purposes of consultation in the UK, and to demonstrate proposed roles in the UK on 1 August 2020.

Services



Note: Document created for purposes of consultation in the UK, and to demonstrate proposed roles in the UK on 1 August 2020.